

Atelier d'Hémato-Pathologie

Société Tunisienne de Pathologie

*Société Tunisienne d'Hémato-
Cancérologie*

Roche Tunisie

Hammamet, 4-5 Mars 2016

N° 8

Lymphomes cérébraux primitifs

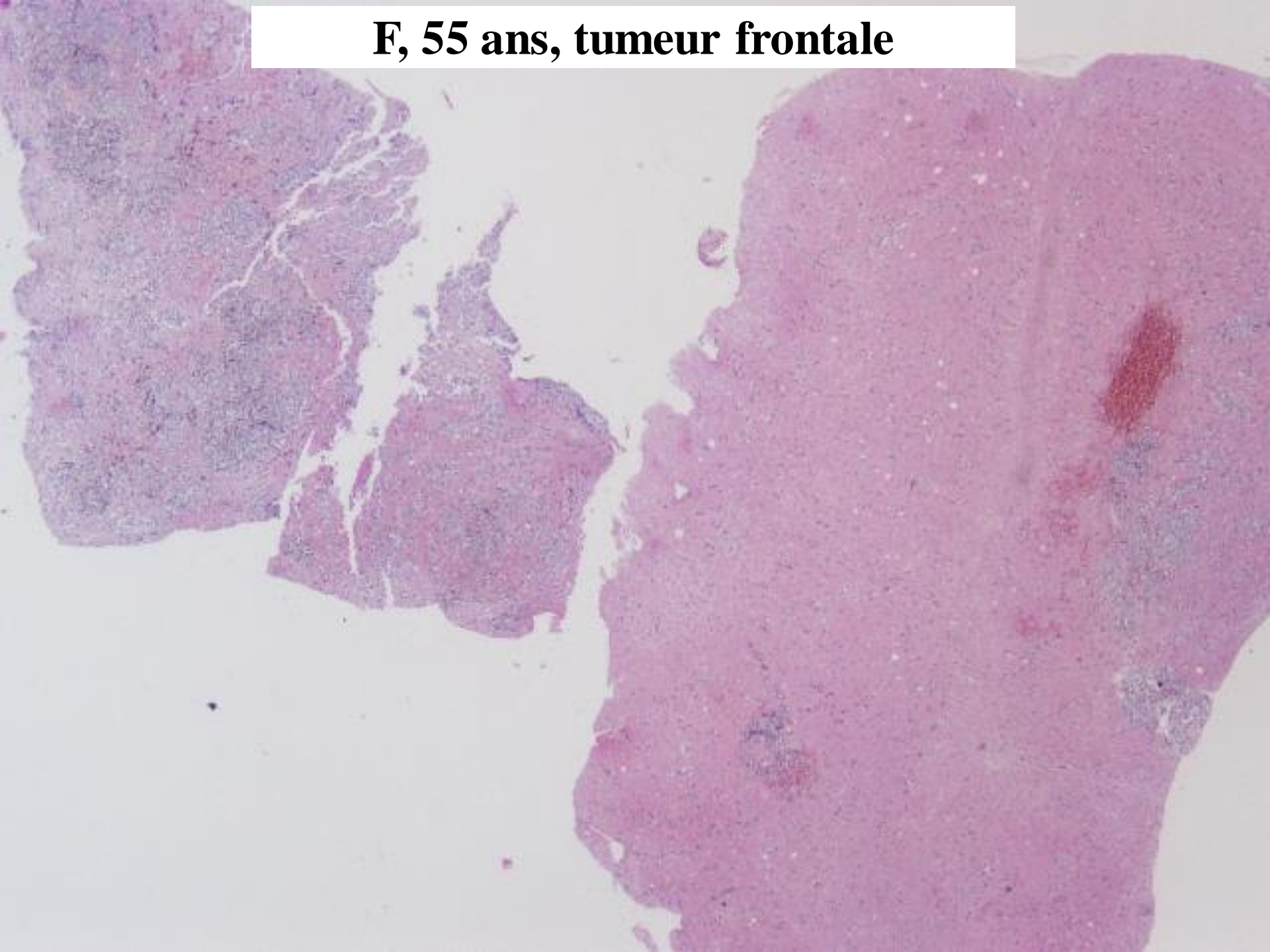
Antoine de Mascarel, Bordeaux

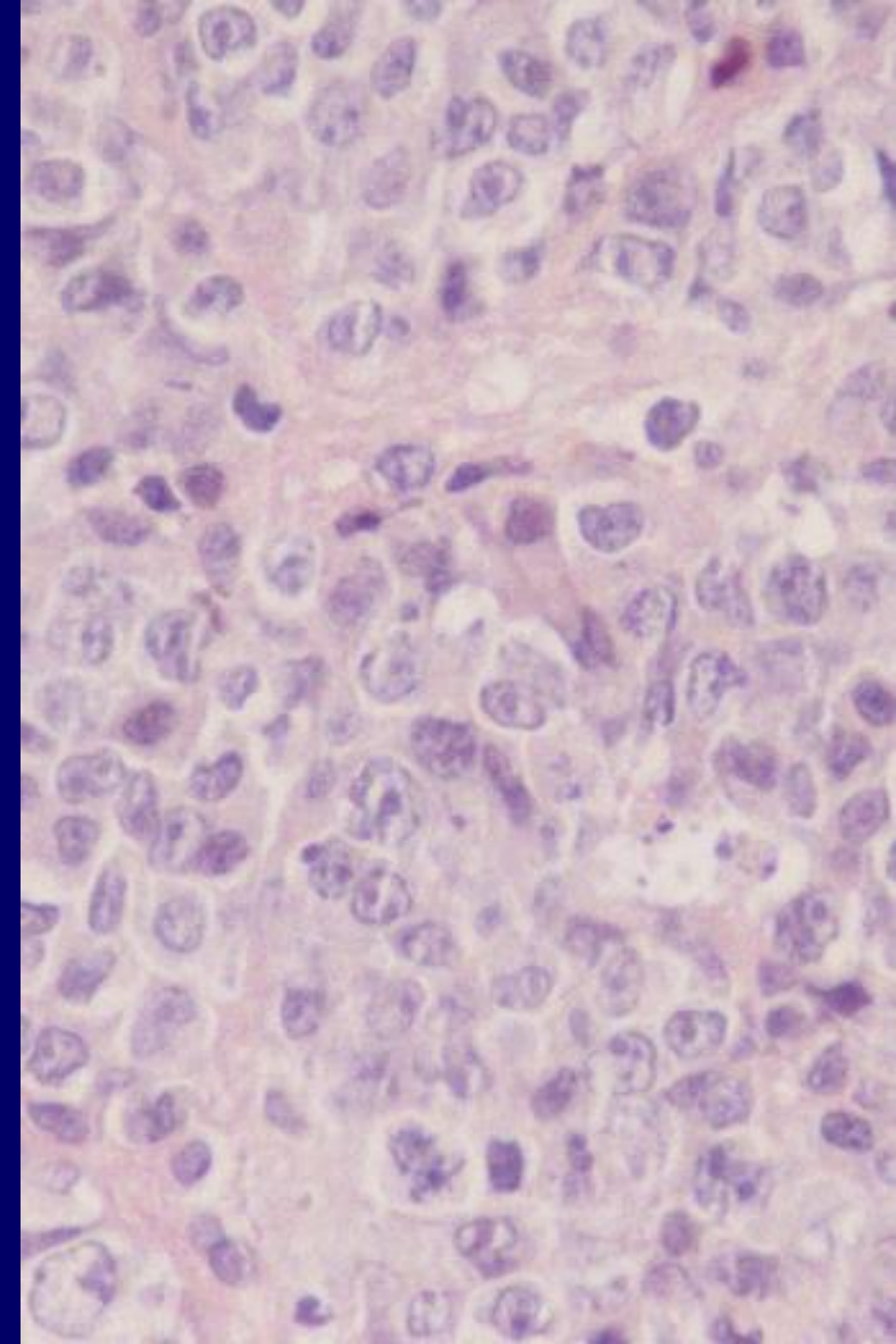
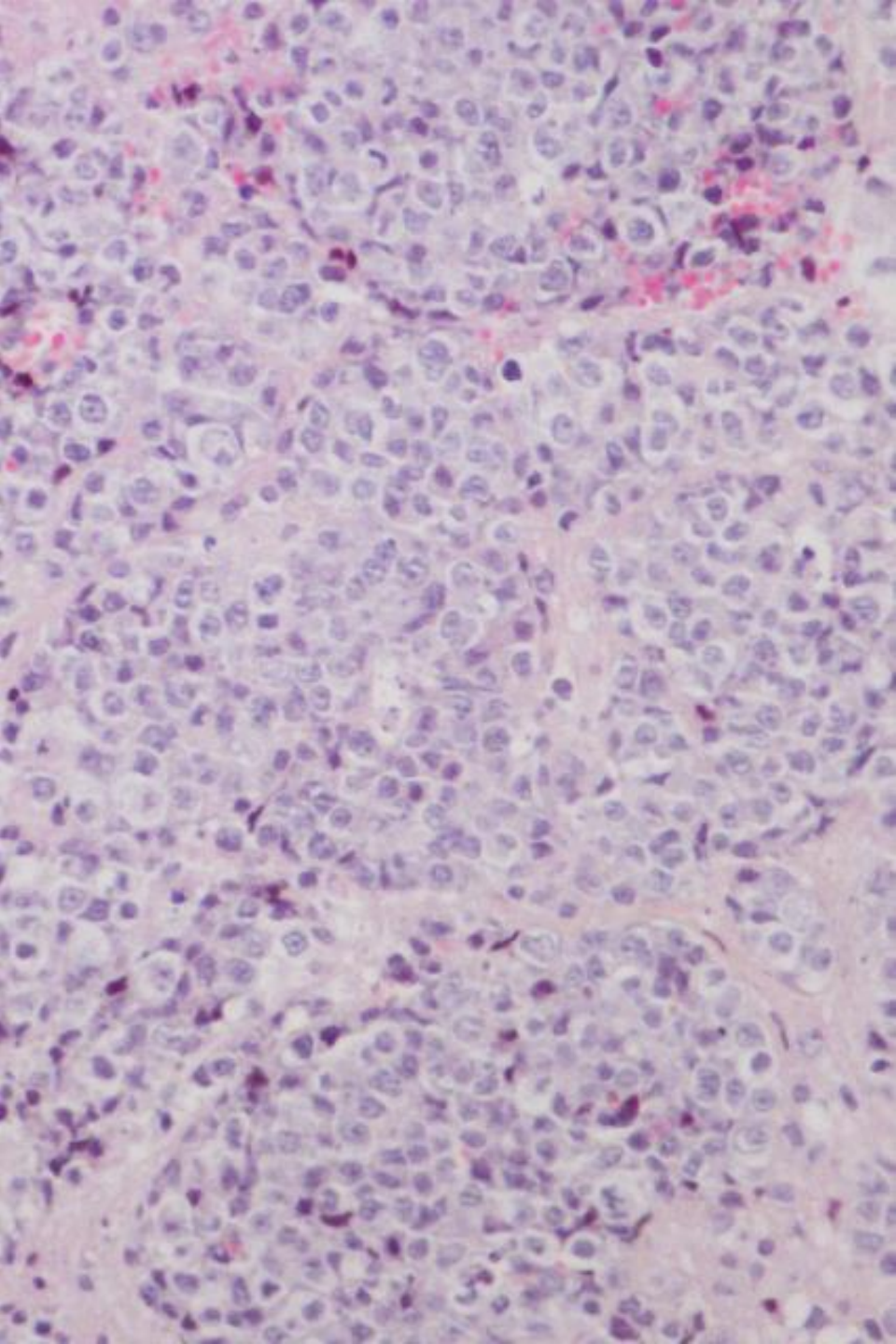
« antoine.demascarel@chu-bordeaux.fr »

Lymphomes Cérébraux Primitifs

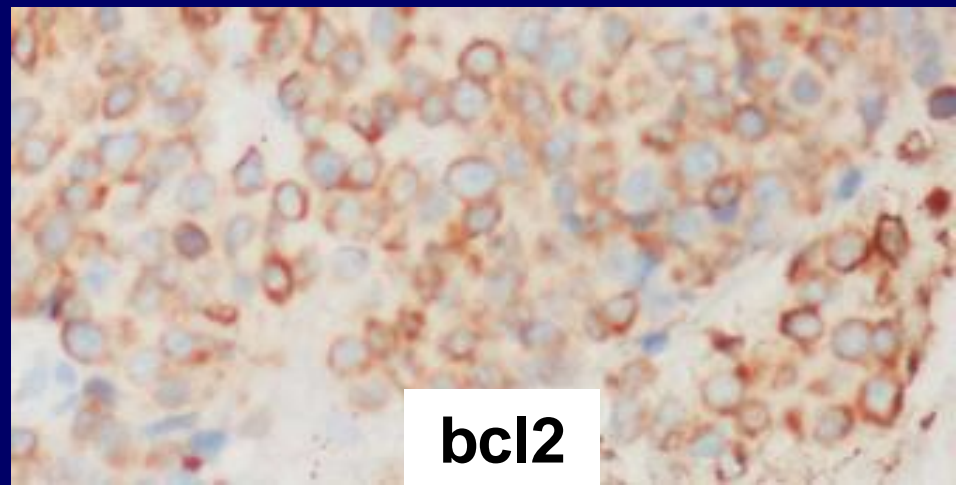
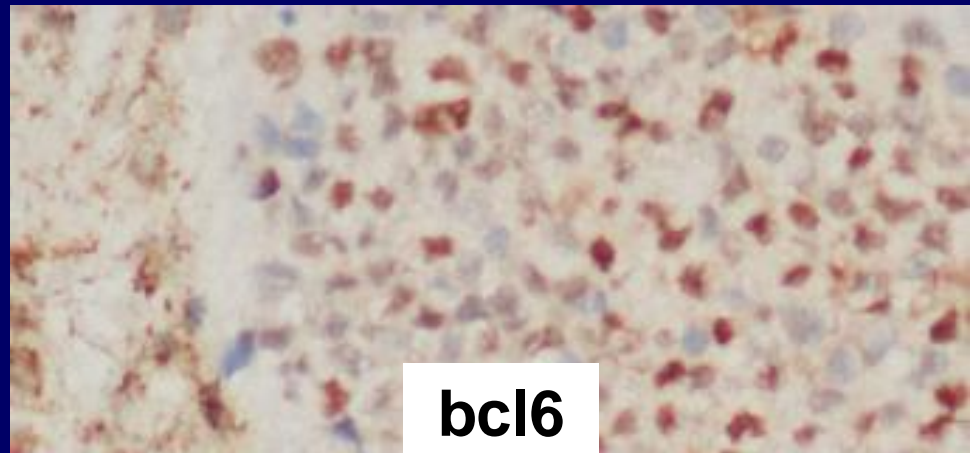
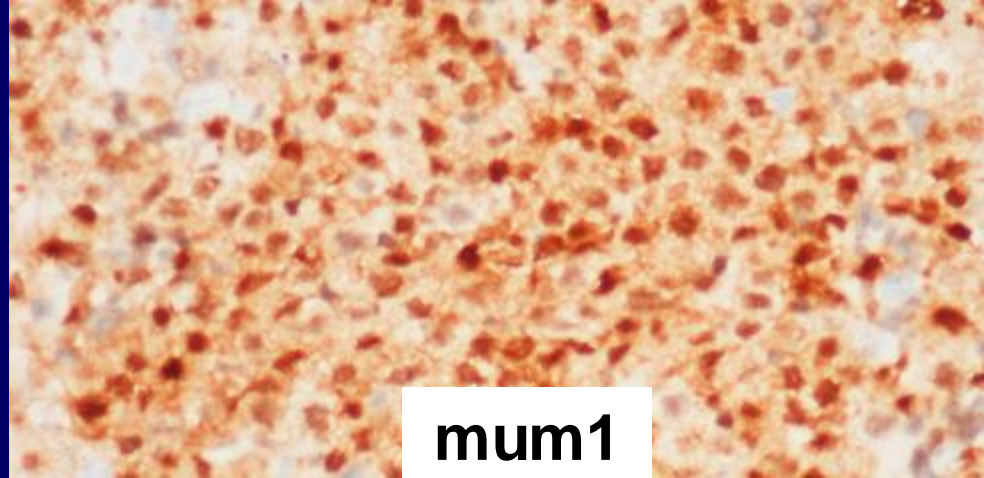
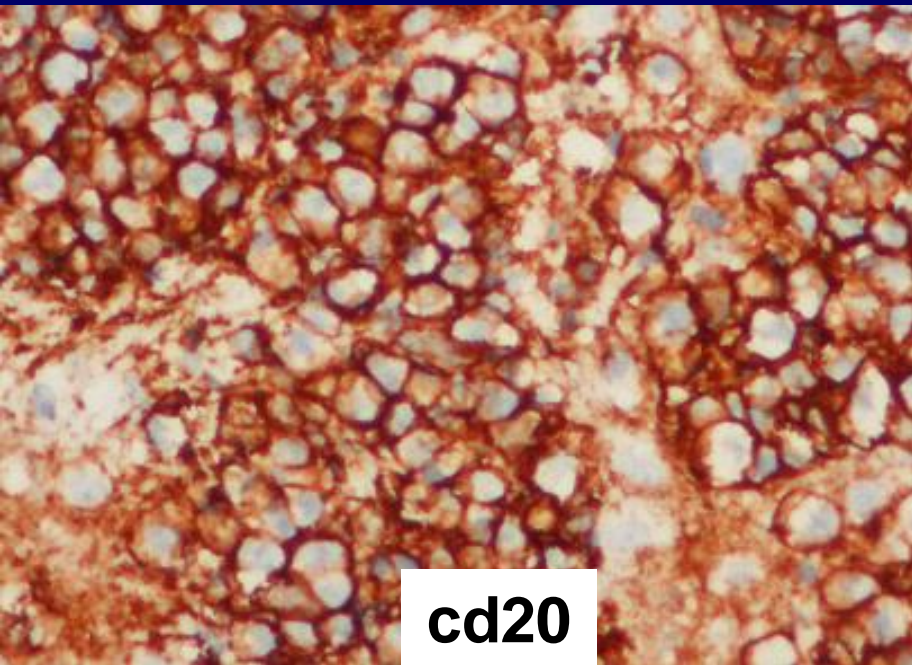
- 95% : DLBCL ; très rares LT, L de la zone marginale extra-ganglionnaire, Burkitt, L lymphoblastique
- 60 ans, H > F,
- unique: 65% ; multifocale : 35%
- 20% : siège orbitaire
- plus fréquent chez immunodéprimés congénitaux ou acquis (HIV, greffés)
- Dc parfois difficile si biopsies stéréotaxiques

F, 55 ans, tumeur frontale

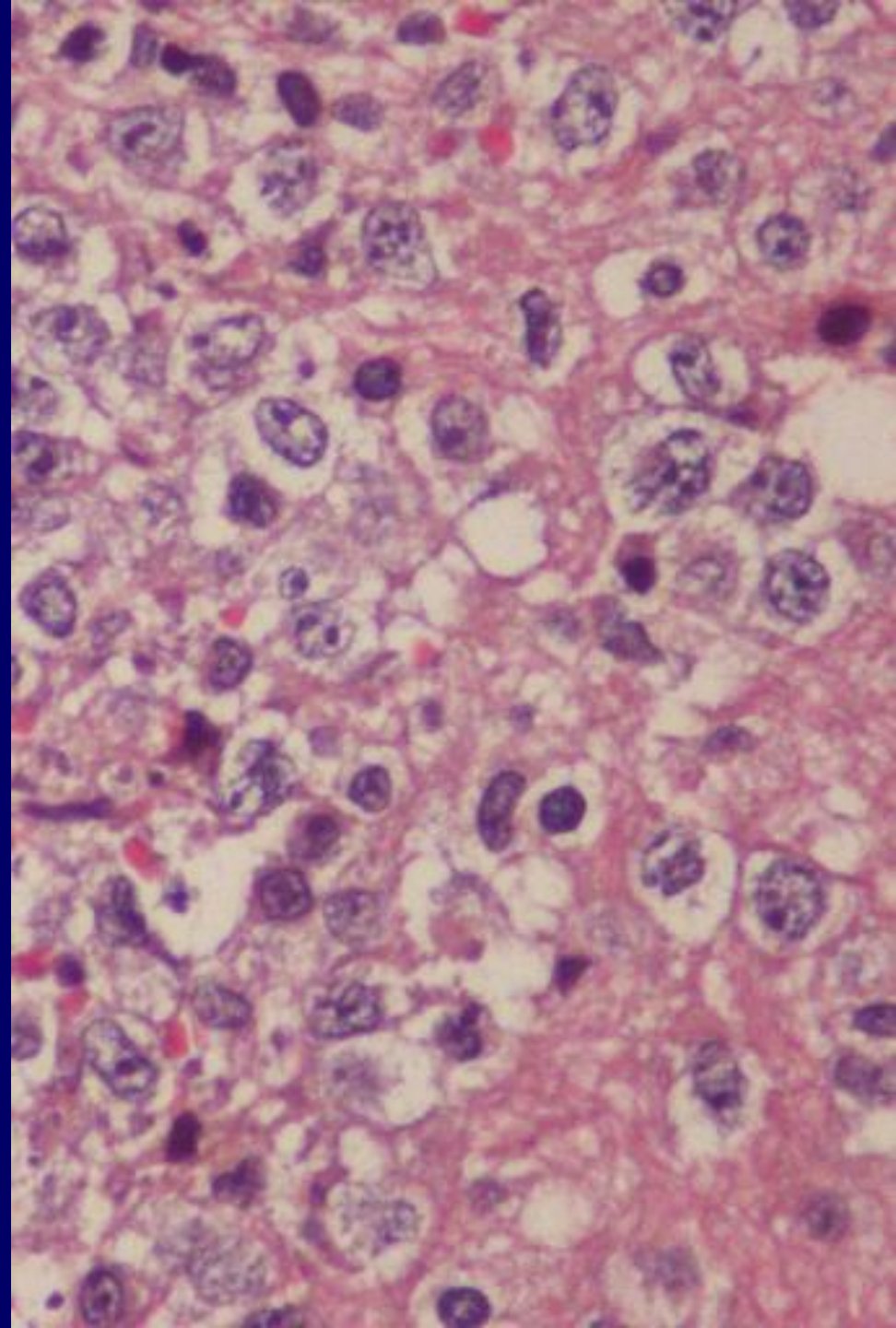
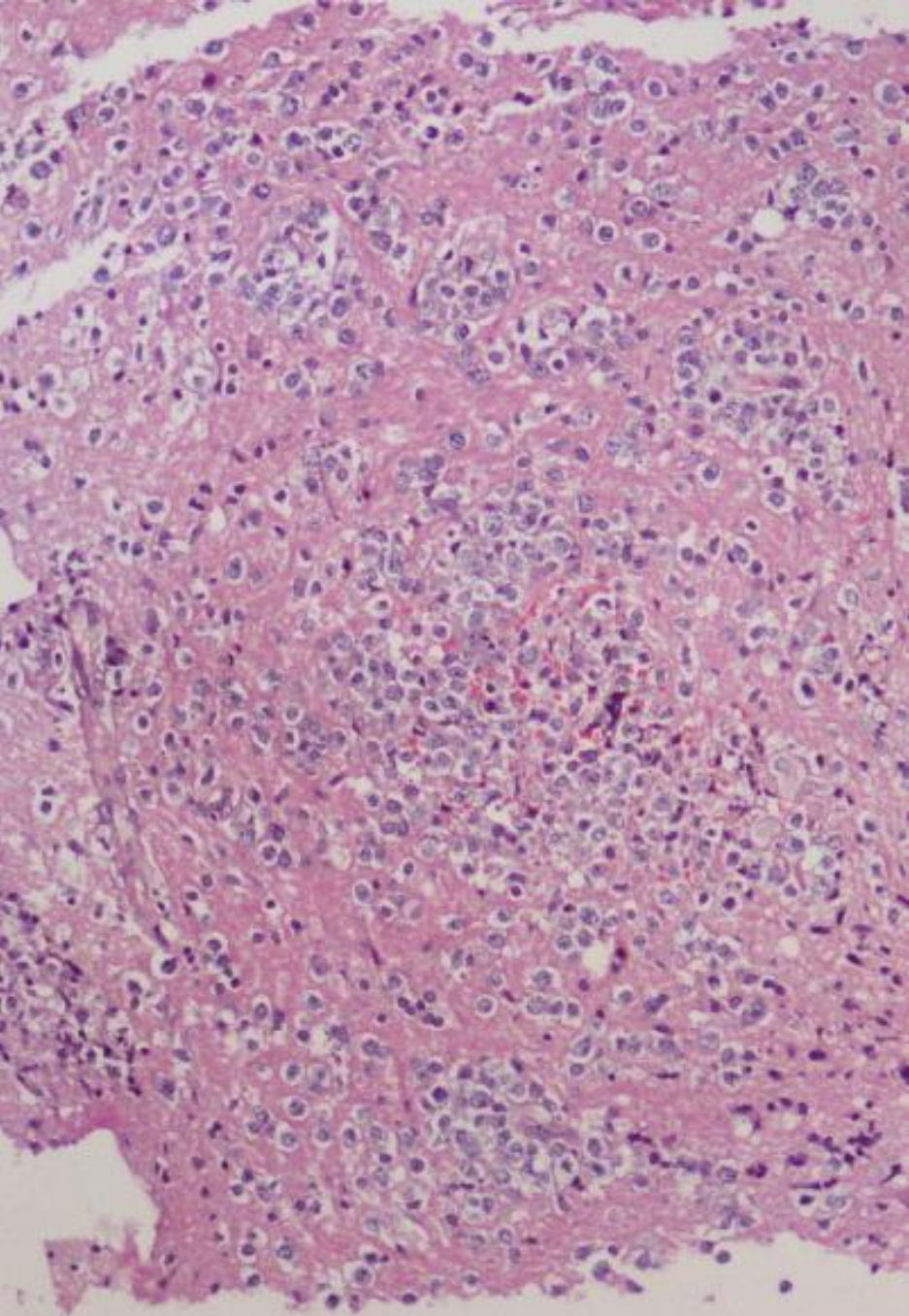




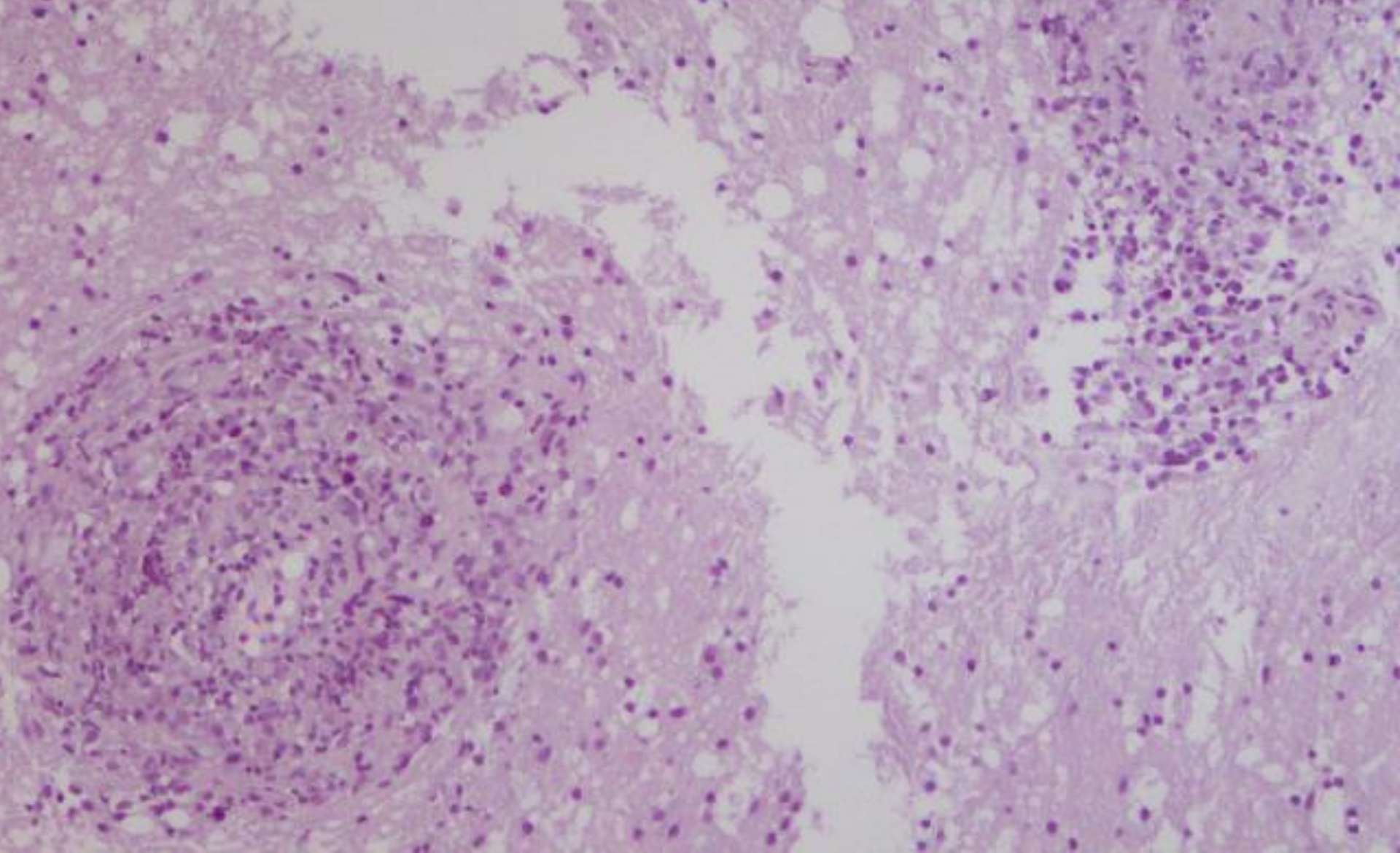
DLBCL cérébral



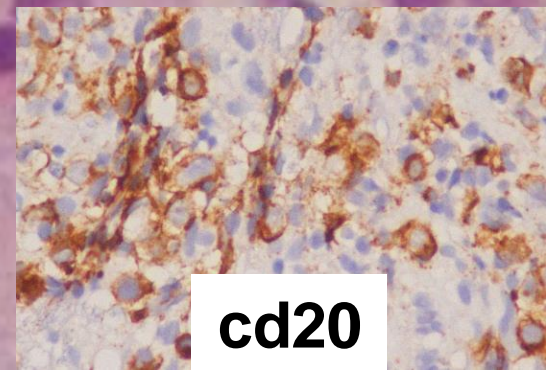
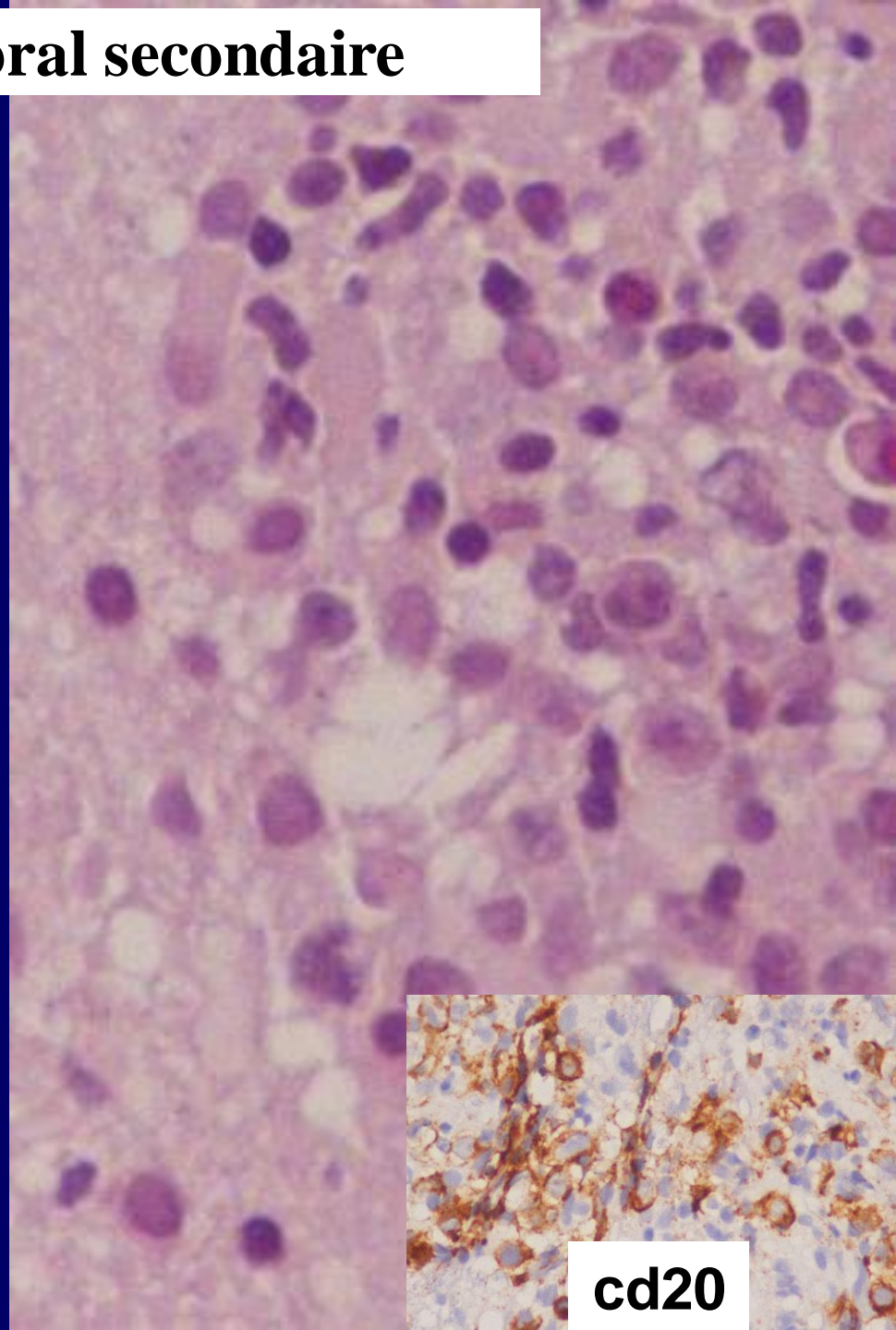
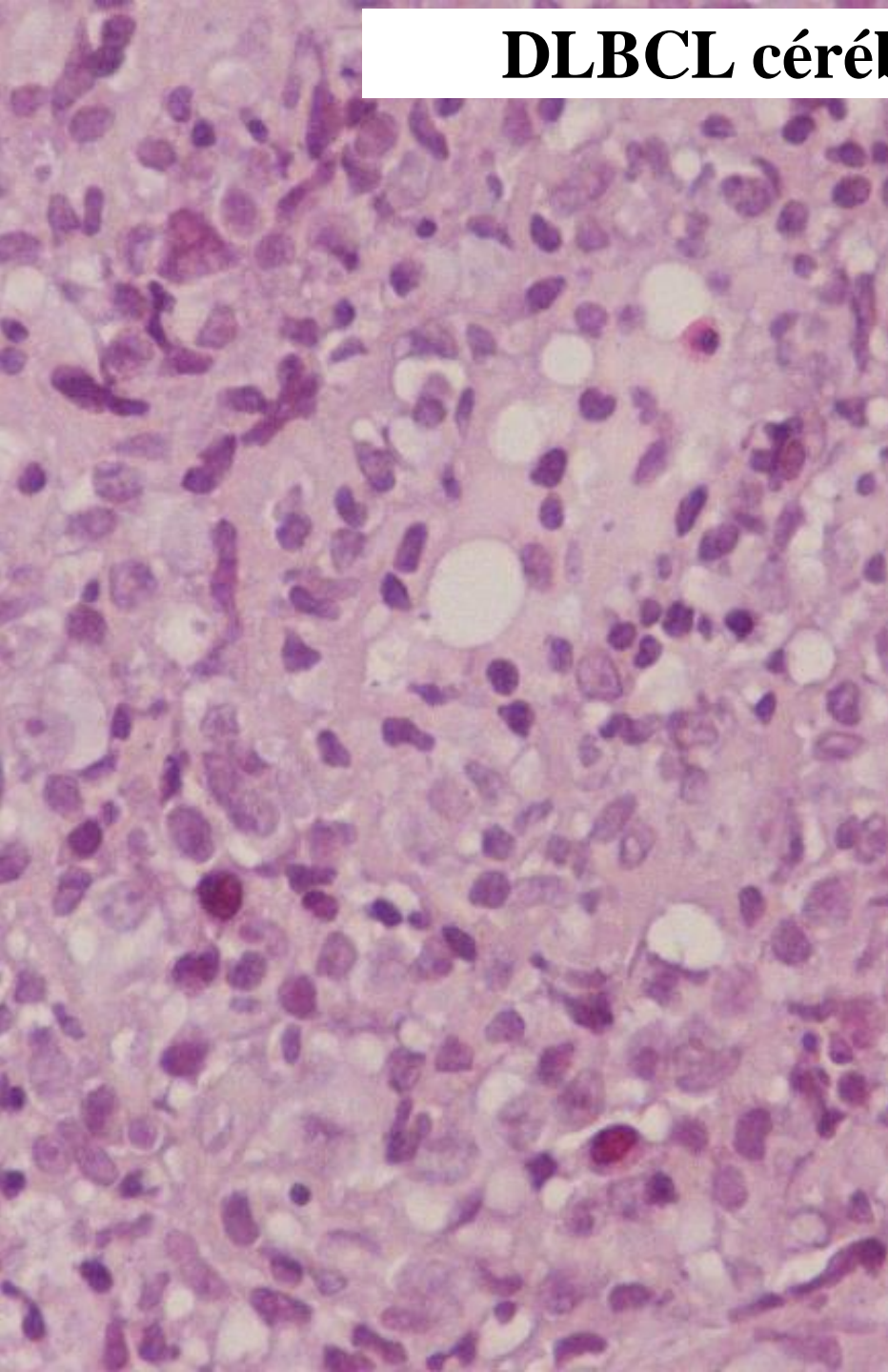
- **cd10** —
- **Mum1** +
- **Bcl6** +
- **Bcl2** +



**H, 75 ans. DLBCL non GC épiploïque. 5 mois après le Dc, en cours de chimiothérapie: tr neurologiques.
Lésion sus-tentorielle, intraparenchymateuse**



DLBCL cérébral secondaire



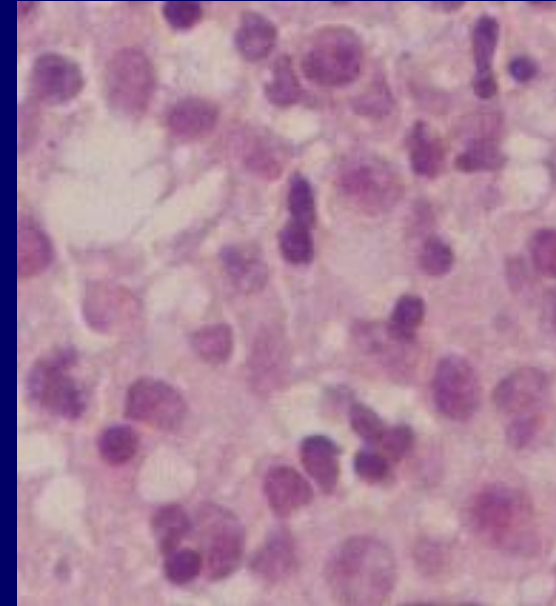
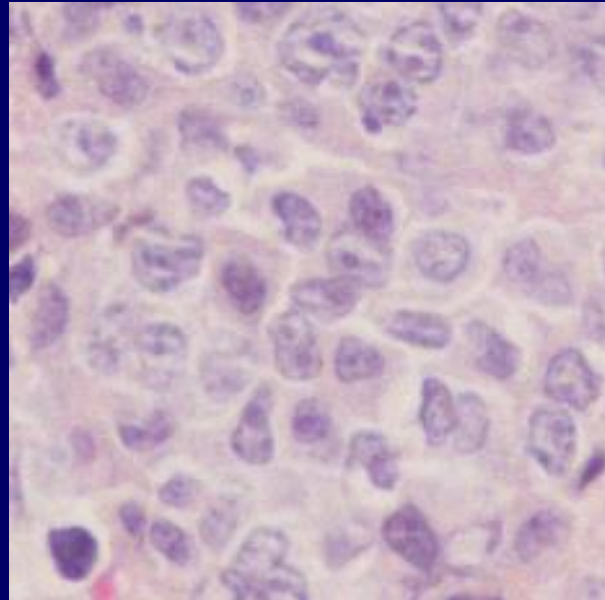
cd20

DLBCL Cérébraux

Primitif

Secondaire

• **morphologie**



• **antécédents**

non

DLBCL

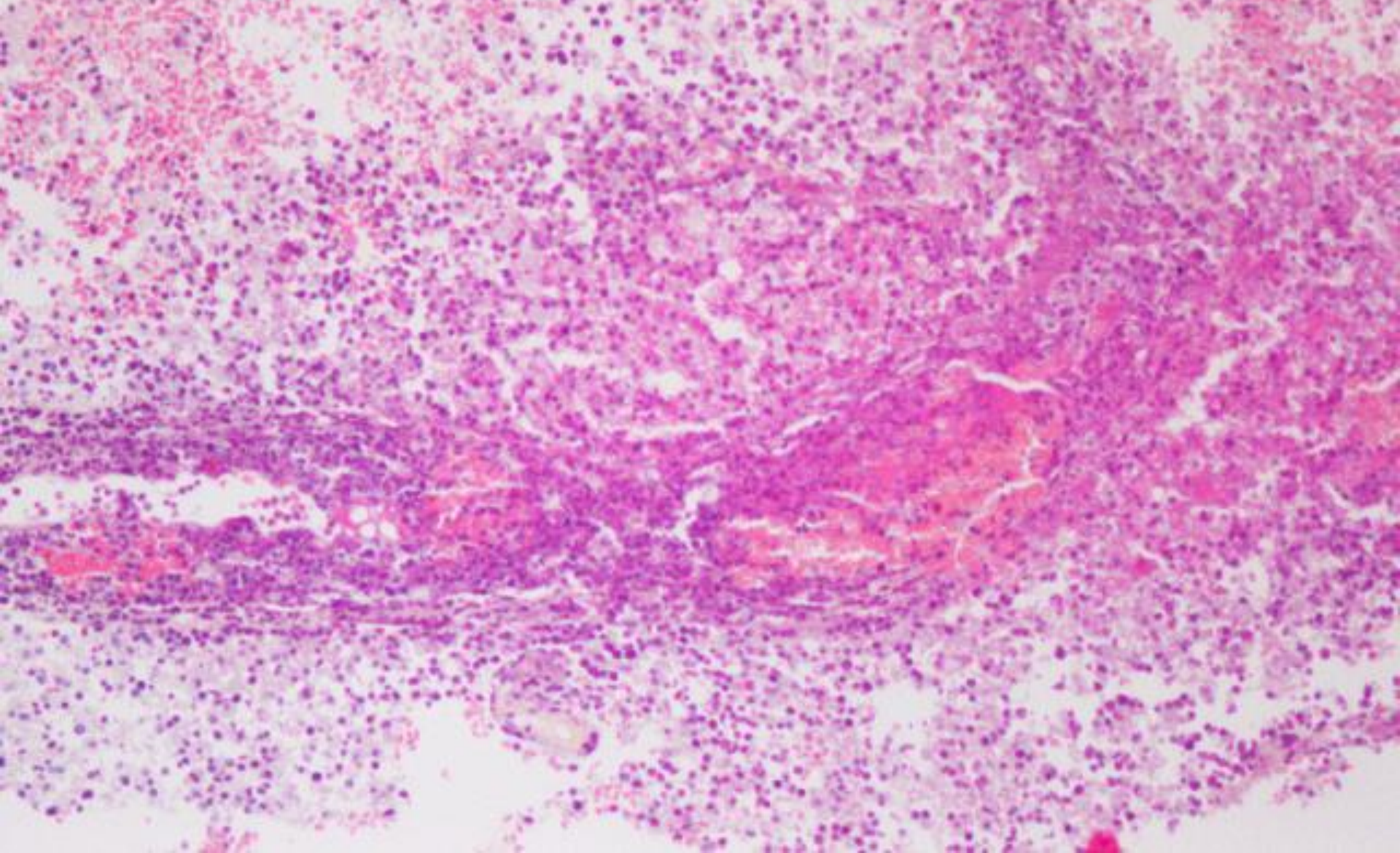
• **Myd88 muté**

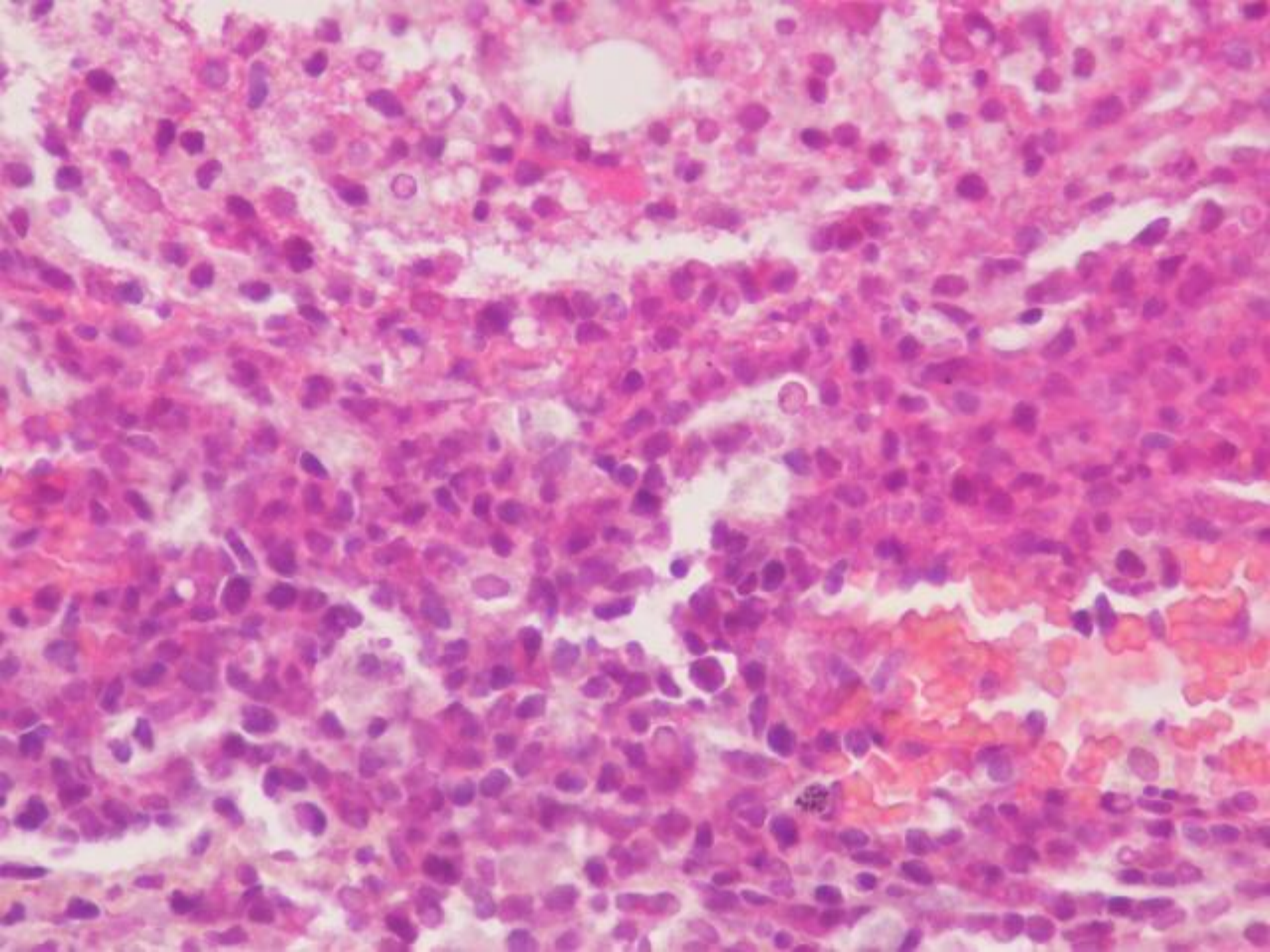
+ (79%)

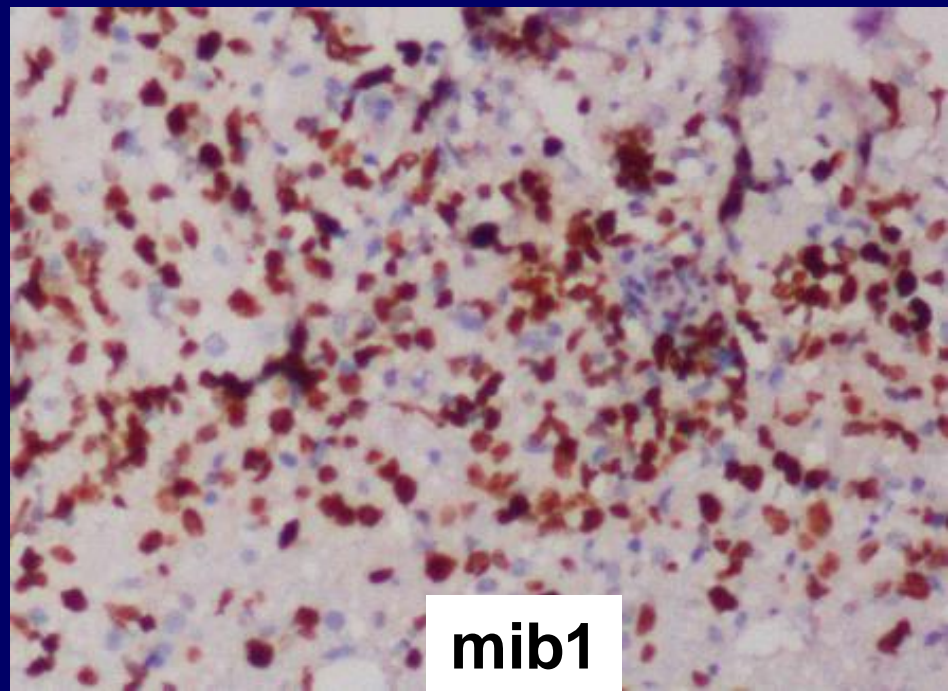
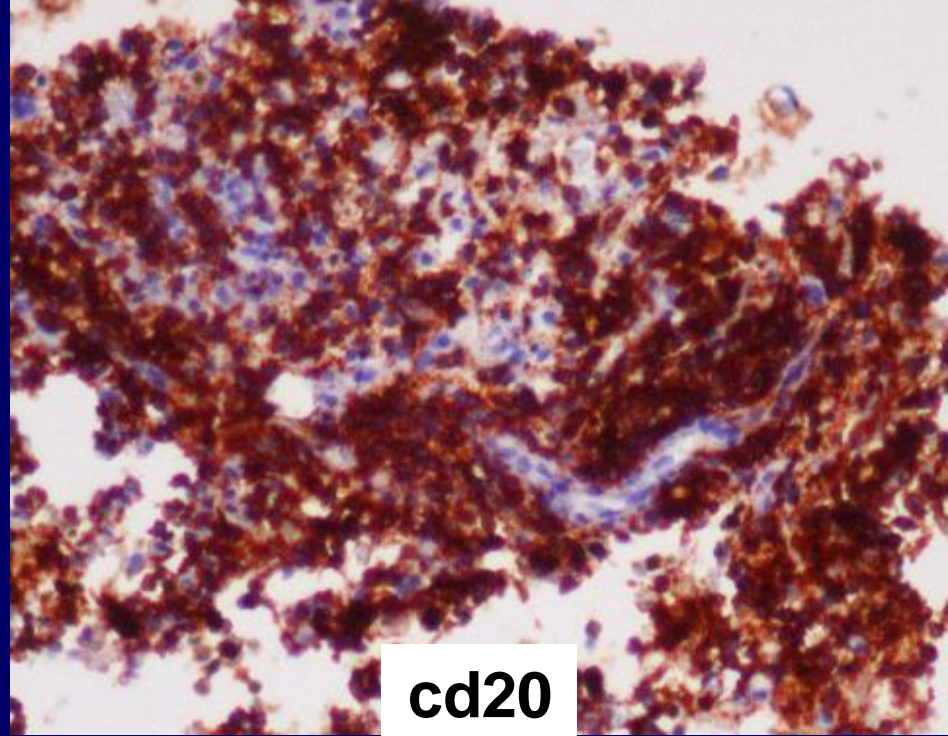
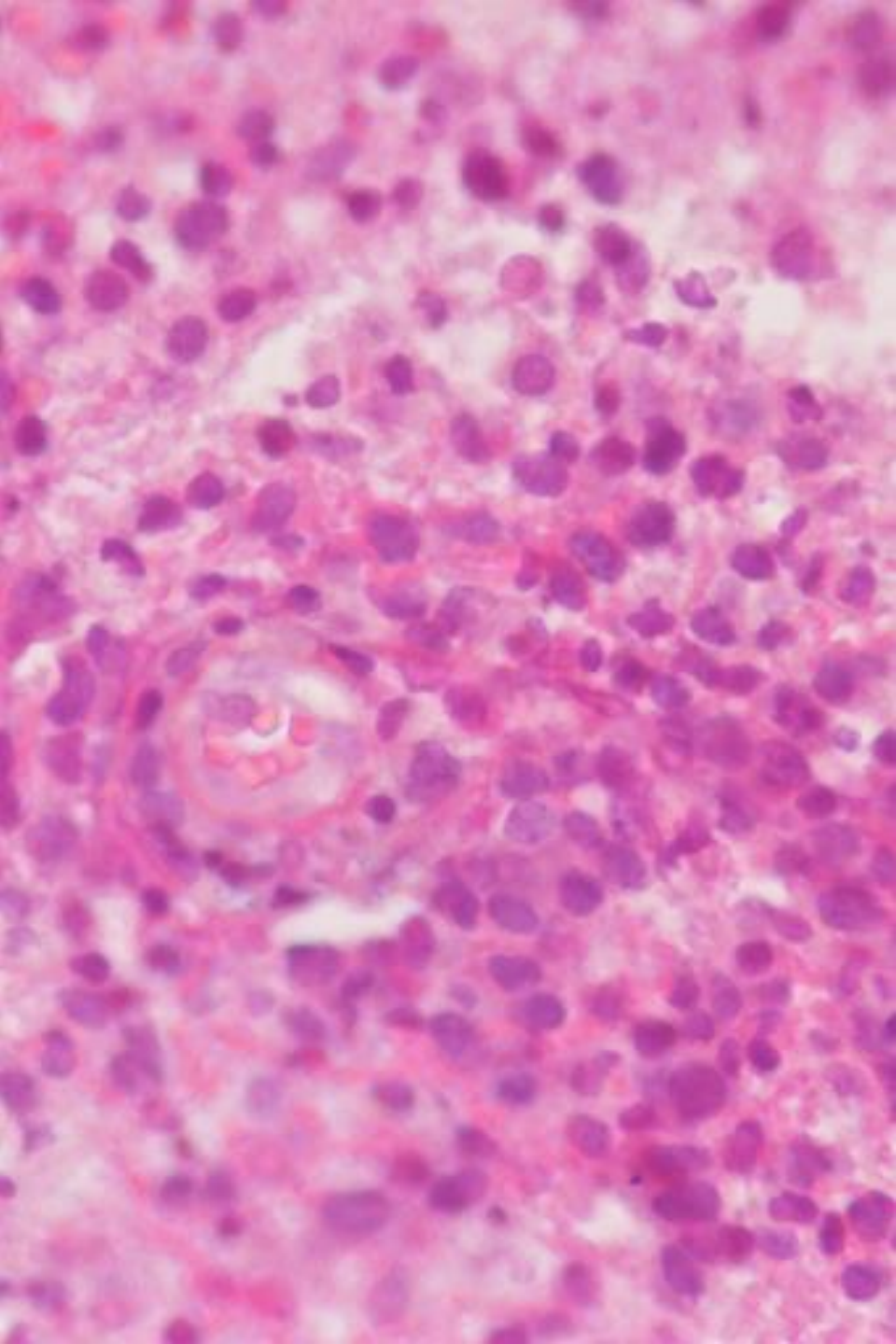
non

(Clin cancer Res 2015;21:3986-94)

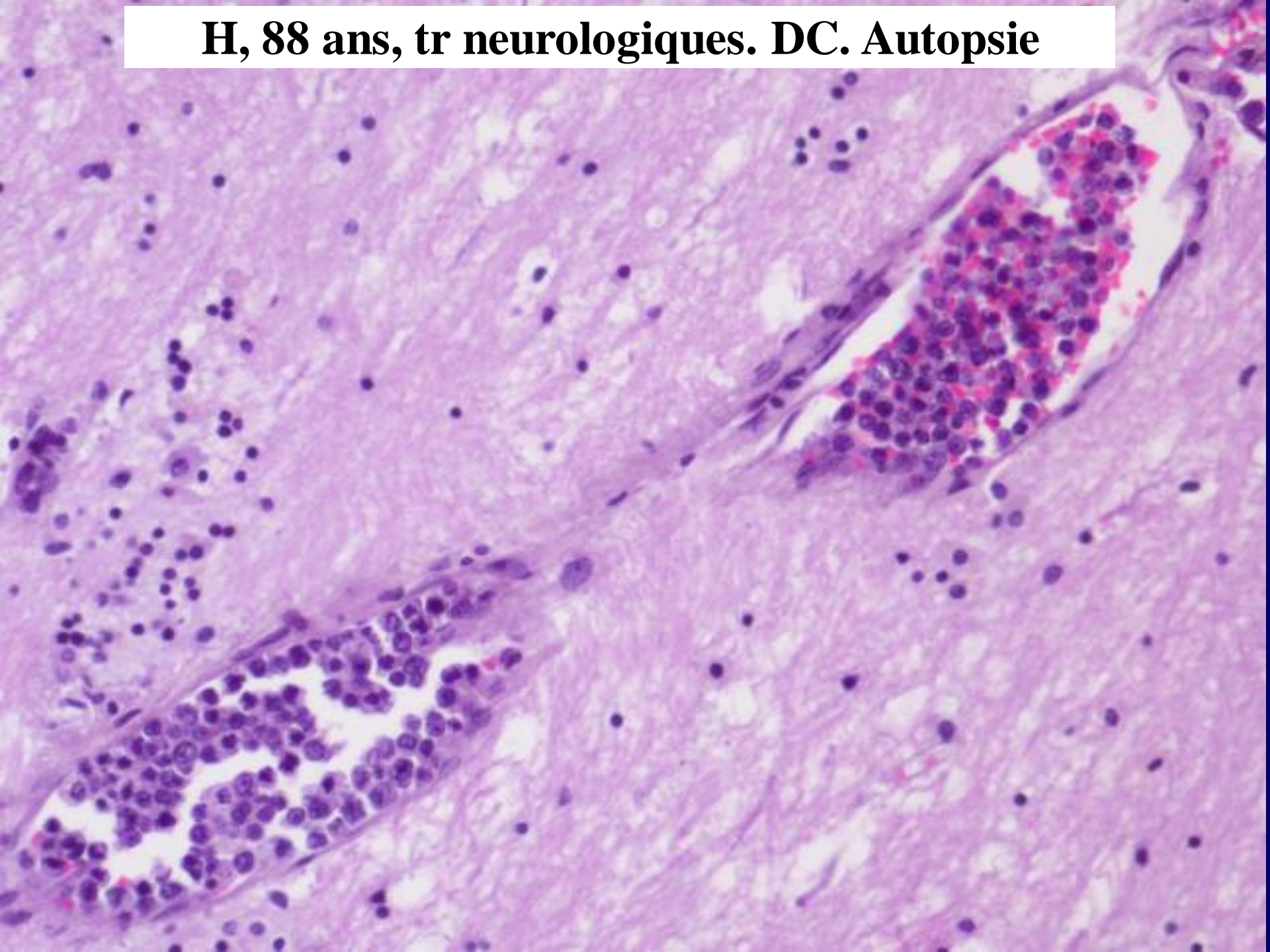
F, 55 ans. Hémiparésie gauche. IRM: tumeur calleuse paramédiane droite de 4,5 cm. Corticothérapie et biopsie stéréotaxique à J30.



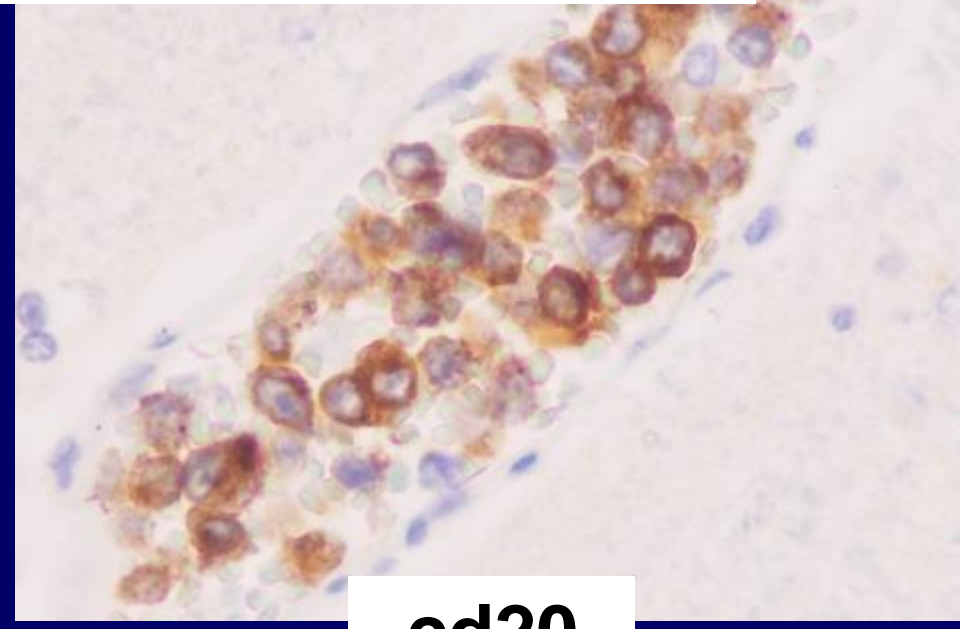
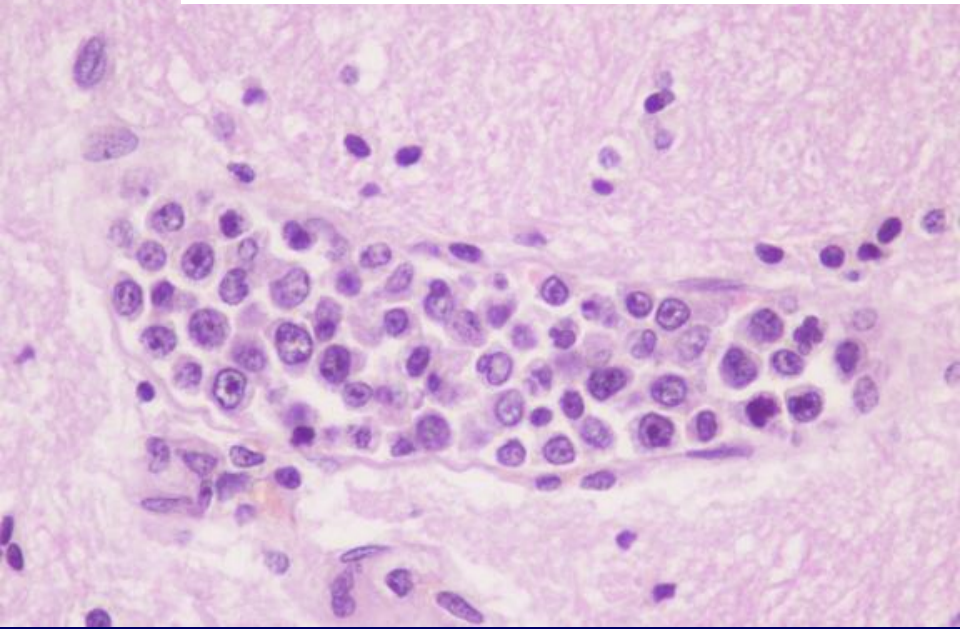




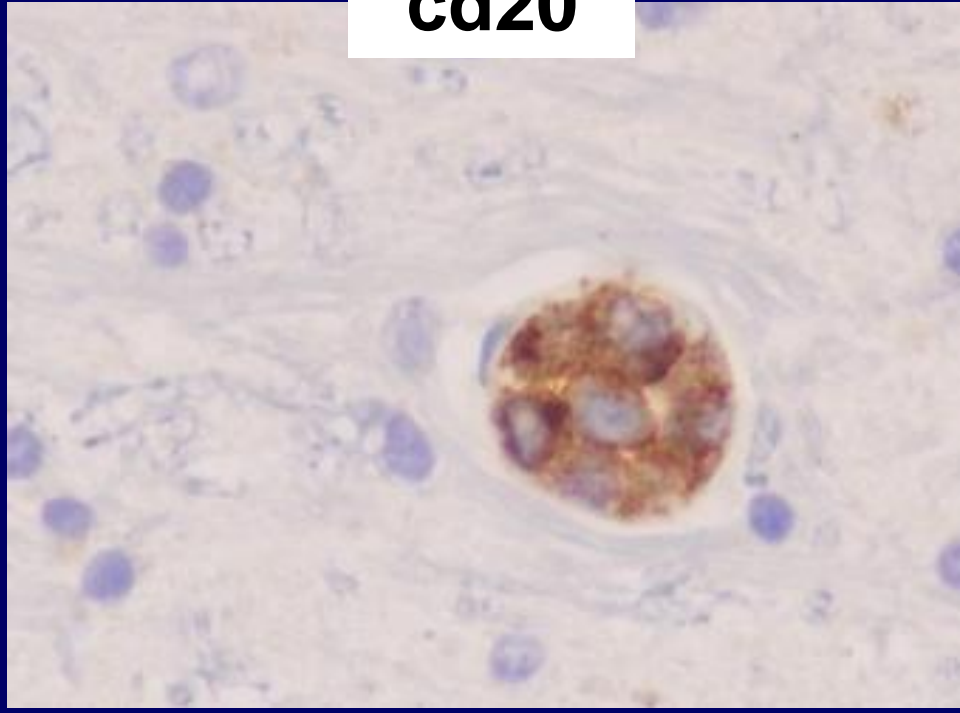
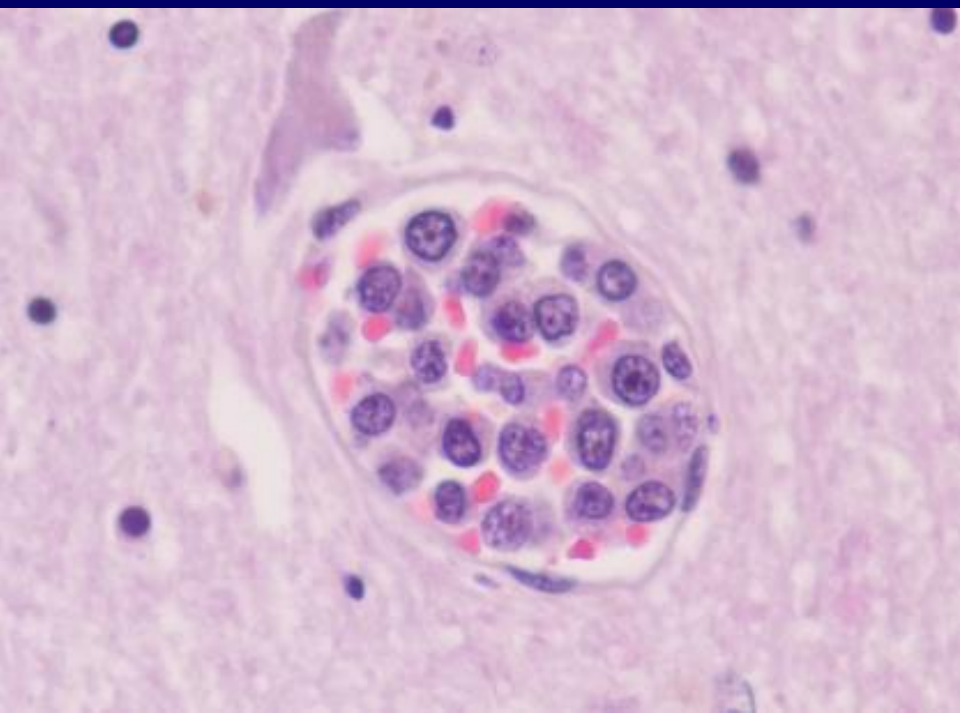
H, 88 ans, tr neurologiques. DC. Autopsie



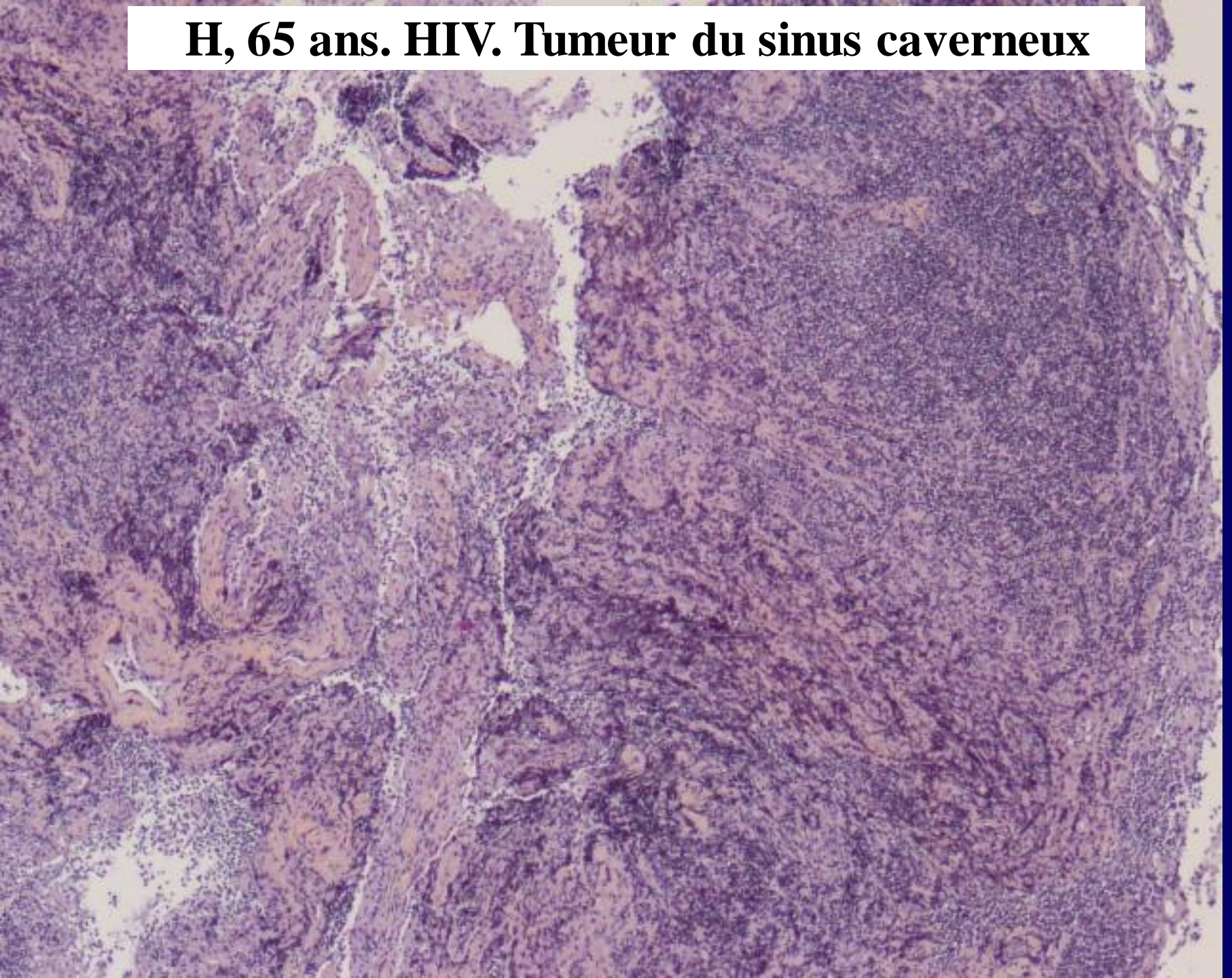
Lymphome à grandes cellules B Intravasculaire

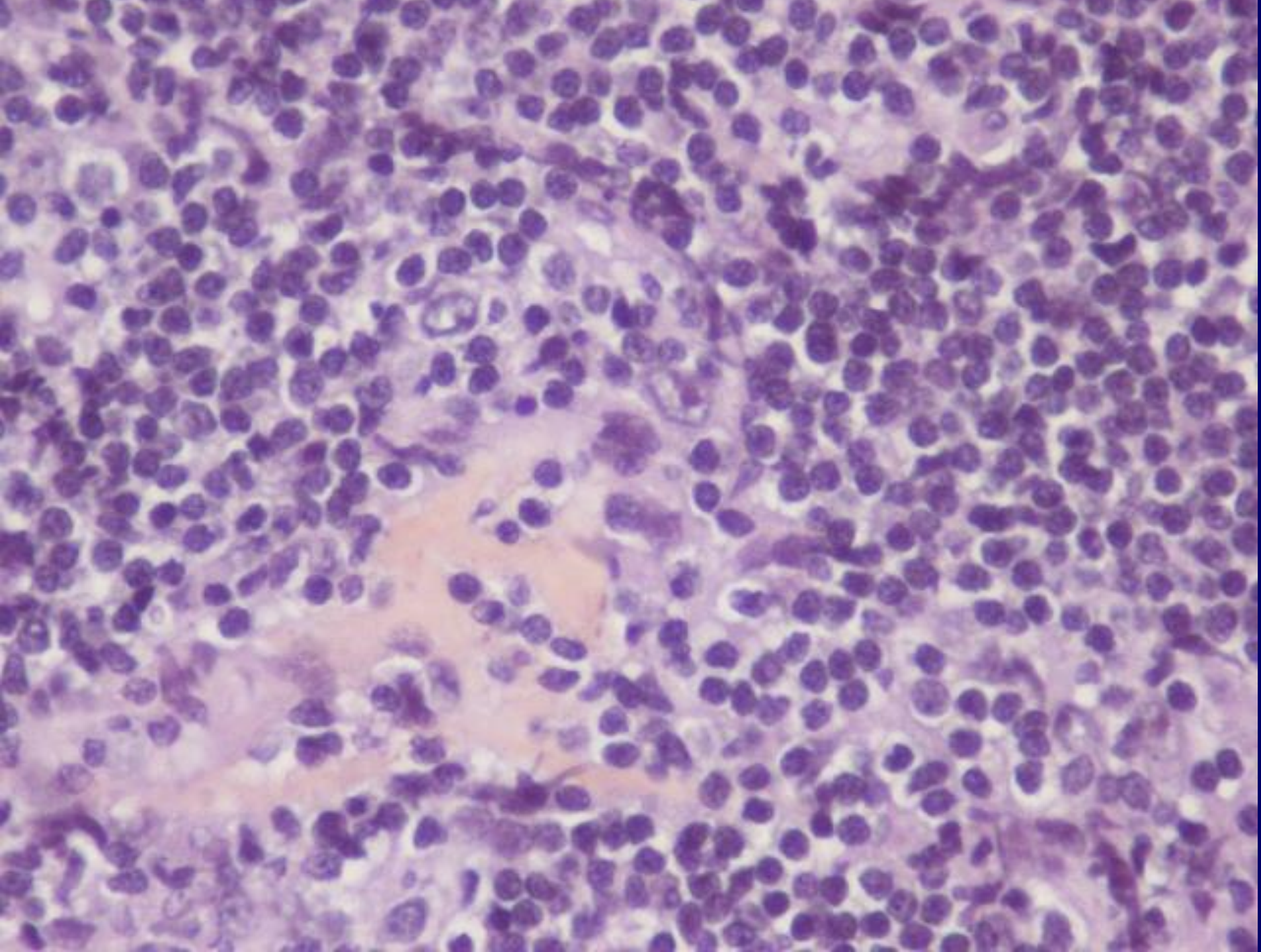


cd20



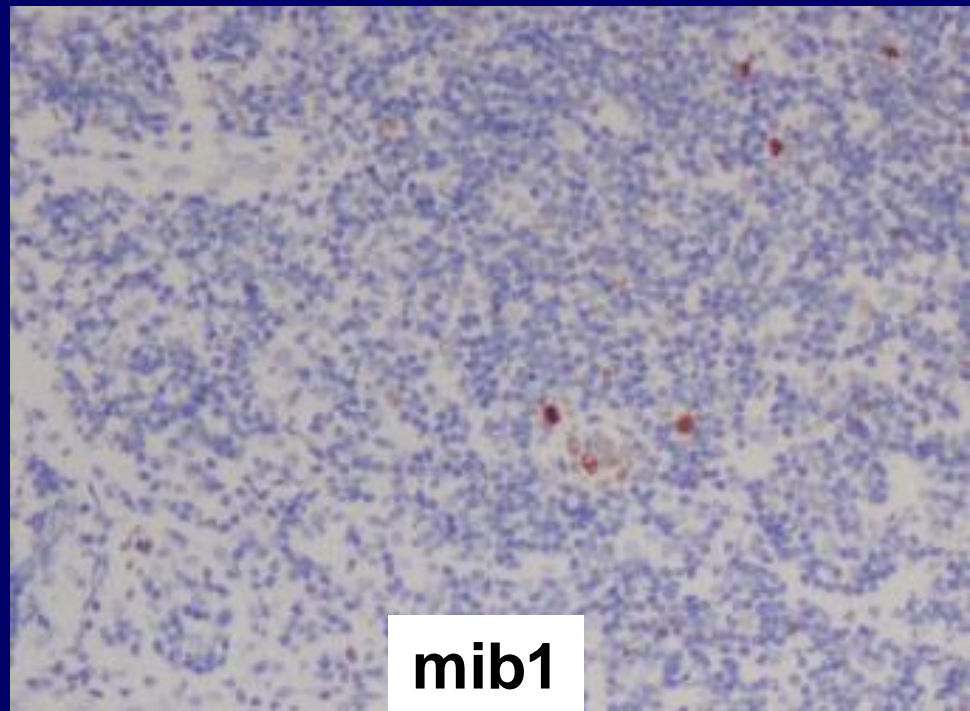
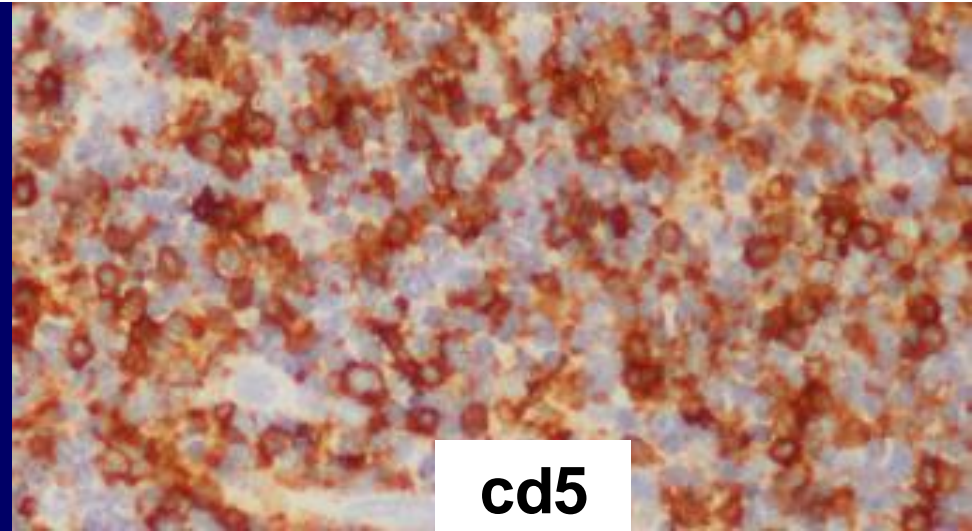
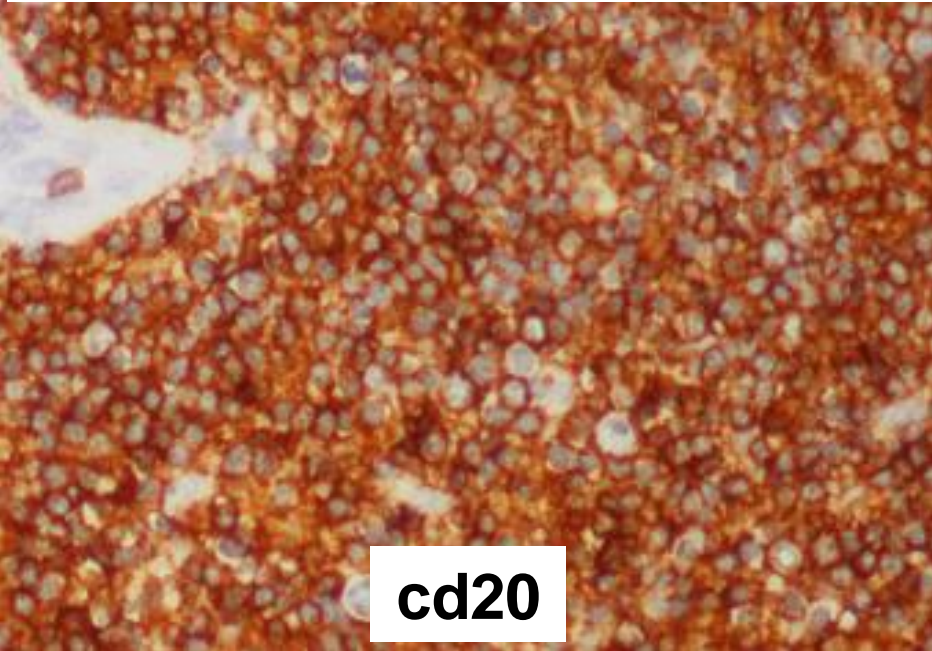
H, 65 ans. HIV. Tumeur du sinus caverneux





L cérébrale de la zone marginale extra-ganglionnaire

Lymphome cérébral du MALT



- pas de monotypie
- EBV-EBER –
- Myd88 non muté
- 8 R-CHOP + méthotrexate:
RC à 16 mois

L Cérébral du MALT

- Très rare
- 5 cas NY (*Clinical Lymphoma & Myéloma 2009;9:E5-E9*)
 - 69 ans (61-78). Non HIV
 - 2 lésions diffuses, 3 « masses »
 - petites c/ B, cd5-, 3/5: monotypie IgG lambda
 - ttt: - 2 : chirurgie (Dc de méningiome) + Rdttt
 - 2 : Rdttt
 - 1 : R-CVP + Rdttt
 - RC (suivie: 4,5 ans)

Lymphomes Cérébraux Primitifs

95% : DLBCL